

I want my logs to show more characters than is exported from my music scheduling software.

Description

When the logs are exported from your music scheduling software into the MediaTouch format, the Artist and title only get represented by 15 characters each. This can lead to the songs not displaying enough information on the screen to properly describe them. To correct for this, Log Tools can get the Artist and Tilting information for each track from the audio library. Here are the steps to make this happen.

Steps

1. in Log Tools under the Utilities menu pick Options

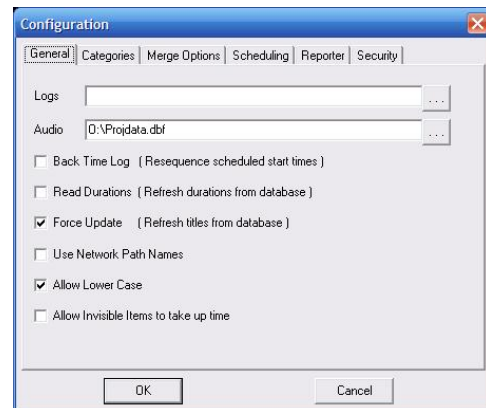


2. Turn on the Force Update function then click OK

3. Merge a log as normal

4. After the merge open the log in Log Tools

5. The Log Tools will now read the Artist and Title information from the Audio Library.



6. Under the File menu click on Save.
 - If the save is not lit up, go to the log and make a change to the log, any change, and then click on OK. Now go to File and click on Save
7. Your .IN file will now show up to 32 characters for artist and tiles.